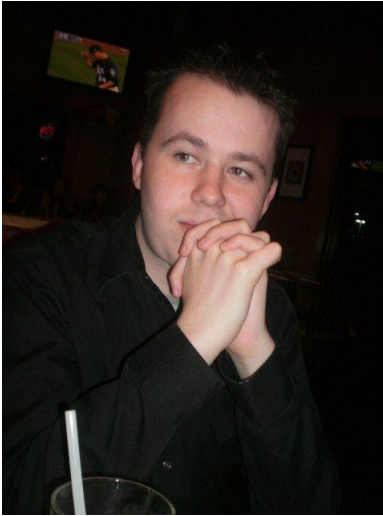


## Kyle Zess



Team Leader

An experienced Quality Analyst and team leader, Kyle has a background in Oil and Gas and has recently switched over to Computer Sciences. Critical thinking and advanced problem solving are his specialties.

## Brady Gavin



Technical Specialist

As an up and coming specialist in the technical design field, Brady has had previous experience customizing websites and creating user manuals. He is putting his skills to the test to ensure the success of this project.

## Conclusion:

Together we have created a working model of how the proposed system will run.

The prototype system is available using this QR Code:



[204.174.60.241/TestHome](http://204.174.60.241/TestHome)

## **The Project:**

“To develop a comprehensive approach to interfacing interpretive park signs, trail maps, and information web pages for use with mobile phones.”

We have upgraded the District of Saanich’s current website to be a more mobile friendly environment. We will also be documenting the process behind linking physical signs to web pages using Quick Response Codes for easy mobile phone navigation.

We are linking these together using a redirect page that will query an information string from the URL to link to the correct page. This will allow for easier data recording for traffic to the new pages.



## **Friends of the Friends of Mount Douglas Park Society Team**

### **In Association With:**



### **District of Saanich**